

### Concealed Toilet Sensor Flush Valve



## Features

- The sensor flush valve combines hands-free convenience with manual control, enhancing restroom hygiene and functionality. It automatically activates with movement and allows for manual operation, ensuring an efficient and versatile solution.
- Experience ultimate convenience with our Automatic Operation, offering effortless performance and streamlined functionality.

## Specifications

Toilet Sensor Switch (Cover)  
Size: 135W x 5D x 130H mm

Water Pressure: 0.07MPa ~ 0.75MPa

Flush Volume : 4.5L

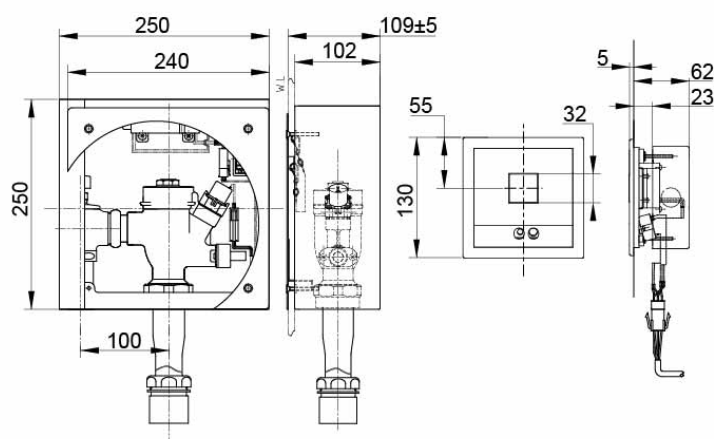
Power Supply: AC 220V Operated

## Parts description

Vacuum Breaker Included

- **TEF75LNV100**  
Concealed Automatic Toilet Flush Valve w/ Box (AC 220V Operated)

TEF75LNV100



( )Recommended Dimension