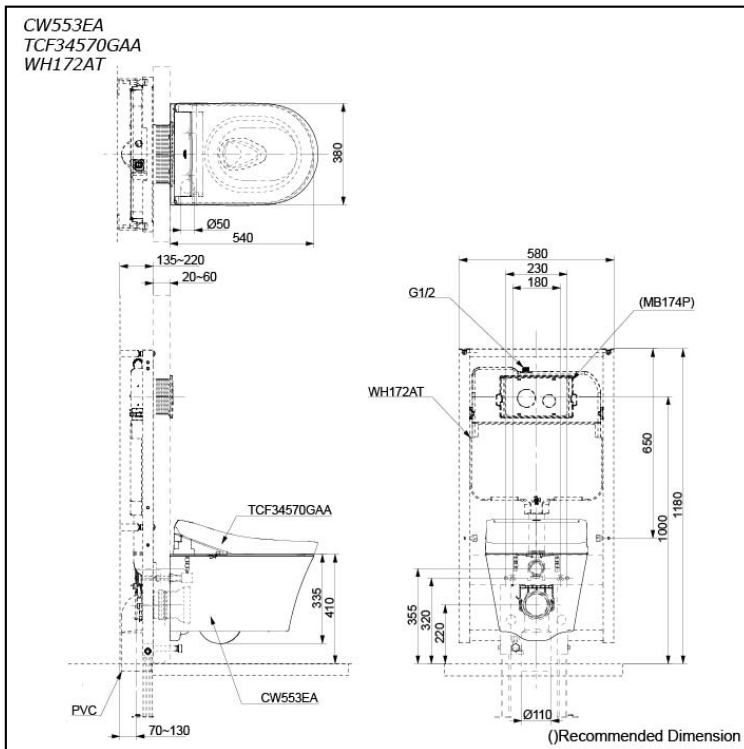


#### WALL HUNG TOILET with WASHLET S5



## Features

- Introducing CEFIONTECT Technology: where super smooth surfaces and ion barrier glazing redefine cleanliness for every bathroom fixture.
- Experience the future of cleanliness with TORNADO FLUSH - Less water, powerful streams, 360-degree clean.
- EWATER+ spreads out and keeps the nozzle clean by preventing bacteria with sanitizing effect
- Harness the power of PREMIST - a fine mist to repel dirt, ensuring a consistently clean toilet experience.
- Explore the seamless, easy-clean perfection of RIMLESS DESIGN.
- Experience unparalleled WATER SAVING efficiency paired with powerful flushing action.
- Keep your bathroom fresh with the Auto Powerful DEODORIZER - it activates after every use to ensure a clean, odor-free environment.
- Luxuriate in the comfort of a HEATED SEAT with customizable temperature control
- Gentle Warmth, Perfectly Personalized - Adjustable WARM AIR DRYING
- Comprehensive Comfort: Includes Rear, Front, and Oscillating Cleansing Functions, with Added Pulsating Cleansing for Enhanced Cleanliness.
- Self-cleaning wand for ultimate convenience.
- Dual Flush System.

EWATER+ is made from tap water by electrolyzed chloride ion. After use, it returns back to ordinary state of water

## Specifications

### BOWL:

Flush System:	TORNADO FLUSH
Water Use:	4.5L / 3L
Rough-in:	H=220
Bowl Shape:	D-Shape
Water Pressure:	0.05MPa~0.75MPa
Size:	380W x 540D x 335H mm

### WASHLET:

Power Rating:	220~240V , 50/60Hz , 826~837W
Length of Power Cord:	1.2 m
Size:	383W x 540D x 130H mm

## Parts description

- **CW553EA**  
D-Shape Wall Hung Closet Bowl (P-Trap) with Concealed feature, hiding all wiring inside the bowl
- **TCF34570GAA**  
Concealed WASHLET S5
- **WH172AT**  
Concealed Tank (4.5L / 3L)
- **TCA465**  
Stop Valve Kit

### Optional Parts

- MB174P  
Flush Panel

### NOTE

- **DO NOT COUPLE THIS WC WITH FLUSH VALVE**

## Colors

White