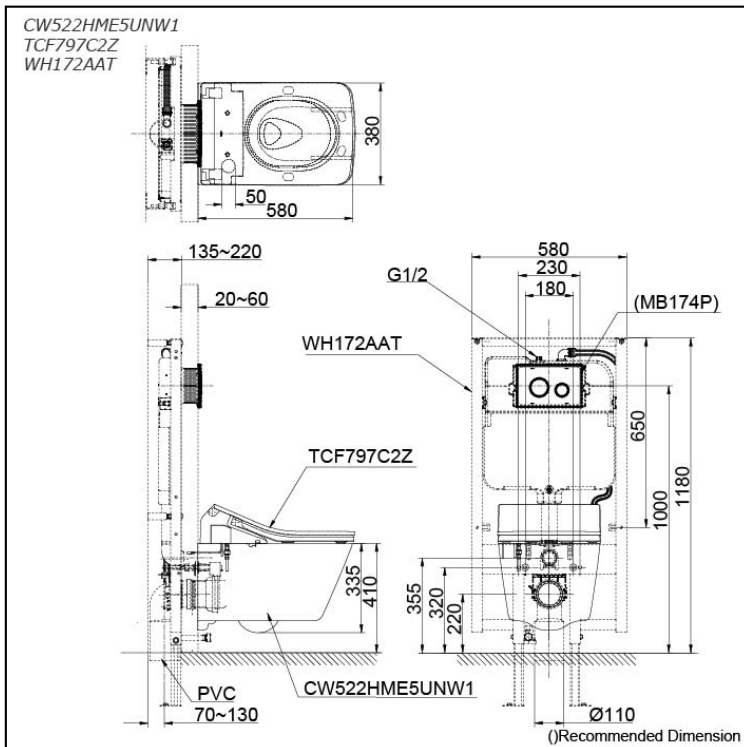


WALL HUNG TOILET with  
WASHLET SX



## Features

- Introducing CEFIONTECT Technology: where super smooth surfaces and ion barrier glazing redefine cleanliness for every bathroom fixture.
- Experience the future of cleanliness with TORNADO FLUSH - Less water, powerful streams, 360-degree clean.
- EWATER+ spreads out and keeps the nozzle clean by preventing bacteria with sanitizing effect
- Harness the power of PREMIST - a fine mist to repel dirt, ensuring a consistently clean toilet experience.
- Explore the seamless, easy-clean perfection of RIMLESS DESIGN.
- Experience unparalleled WATER SAVING efficiency paired with powerful flushing action.
- Keep your bathroom fresh with the Auto Powerful DEODORIZER - it activates after every use to ensure a clean, odor-free environment.
- Luxuriate in the comfort of a HEATED SEAT with customizable temperature control
- Elevate your bathroom experience with Auto Flush, providing a hands-free and hygienic solution with every use.
- Comprehensive Comfort: Includes Rear, Front, and Oscillating Cleansing Functions, with Added Pulsating Cleansing for Enhanced Cleanliness.
- Self-cleaning wand for ultimate convenience.
- Dual Flush System.

EWATER+ is made from tap water by electrolyzed chloride ion. After use, it returns back to ordinary state of water

## Specifications

### BOWL:

Flush System: TORNADO FLUSH

Water Use: 4.5L / 3L

Rough-in: H=220

Bowl Shape: Square Shape

Water Pressure: 0.05MPa~0.75MPa

Size: 380W x 580D x 335H mm

### WASHLET:

Power Rating: 220~240V , 50/60Hz , 832~843W

Length of Power Cord: 0.9 m

Cord:

Size: 383W x 579D x 146H mm

## Parts description

Stop Valve is included.

- **CW522HME5UNW1**  
Square Shape Wall Hung Closet Bowl (P-Trap) with Concealed feature, hiding all wiring inside the bowl
- **TCF797C2Z**  
Concealed WASHLET SX (Auto Flush)
- **WH172AAT**  
Concealed Tank (4.5L / 3L)

### Optional Parts

- MB174P  
Flush Panel

### NOTE

- **DO NOT COUPLE THIS WC WITH FLUSH VALVE**

## Colors

White